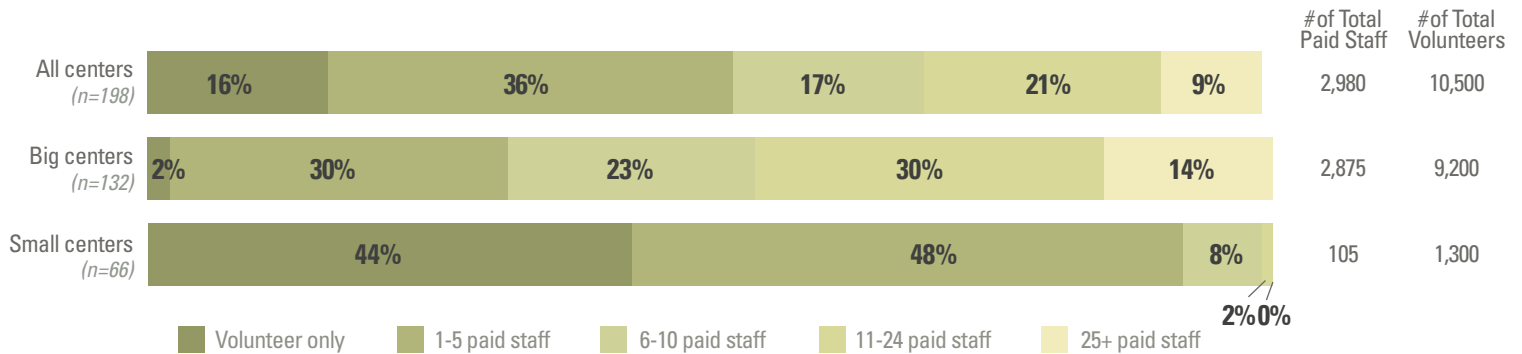


# LGBTQ COMMUNITY CENTER STAFF

**2,980 TOTAL PAID STAFF—AND 10,000+ VOLUNTEERS—ACROSS 198 CENTERS**

## NEARLY ALL SMALL CENTERS RUN ON VOLUNTEERS OR FEW STAFF, WHILE BIG CENTERS VARY IN STAFF SIZE

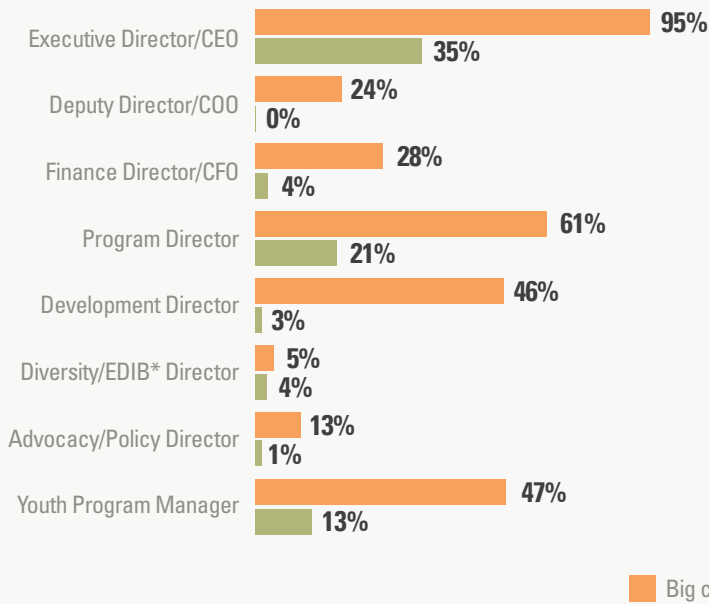
*% of responding centers, by budget size, with each number of staff*



*Note: Percentages may not sum to 100 due to rounding.*

## SMALL CENTERS LESS LIKELY TO HAVE PAID STAFF, BUT MOST LIKELY TO HAVE AN EXECUTIVE DIRECTOR AND PROGRAM DIRECTOR

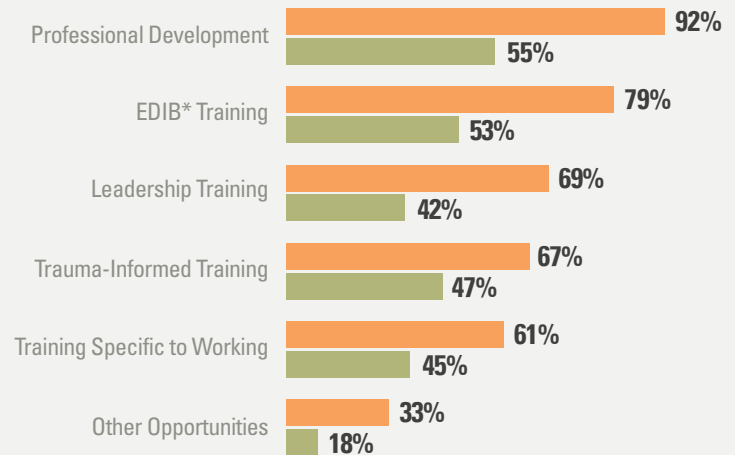
*% of responding centers (n=202) with each paid position*



*\*Note: EDIB refers to Equity, Diversity, Inclusion, and Belonging.*

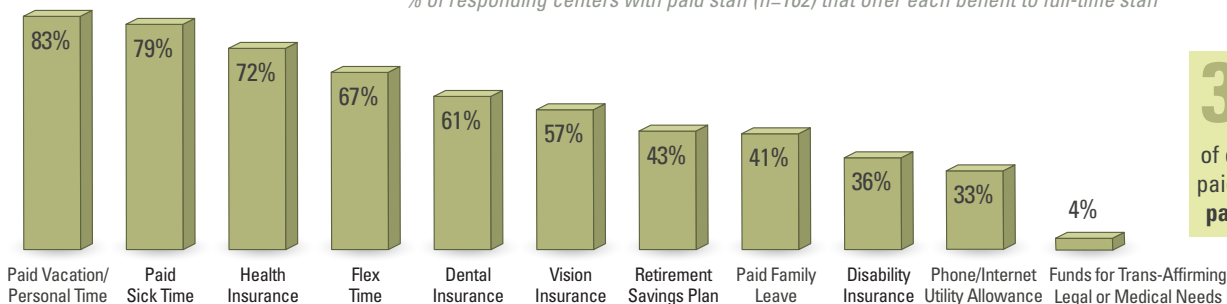
## MANY CENTERS OFFER TRAININGS AND OPPORTUNITIES FOR STAFF

*% of responding centers with paid staff (n=169) that offer each opportunity*



## MAJORITY OF CENTERS WITH PAID STAFF OFFER MANY BENEFITS

*% of responding centers with paid staff (n=162) that offer each benefit to full-time staff*



**38%**  
of centers offer paid sick time to **part-time** staff

**15%**  
of centers offer health insurance to **part-time** staff